

Double Bass Audition Materials: NVYO Philharmonic

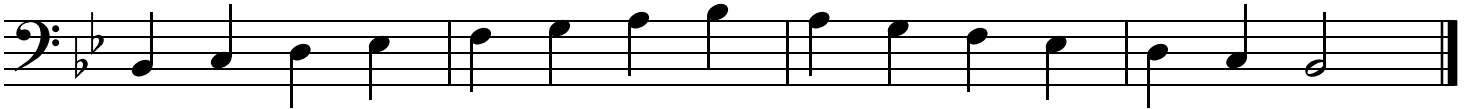
scales • required excerpt • solo

1. Scales quarter note = 60. Use full sound and whole bows.

1. D Major Scale - One Octave



2. B Flat Major Scale - One Octave



2. Required Exercise

Pay special attention to: a strong clear tone, dotted rhythms, the extended hand patterns being in tune, and confident shifting to and from 1/2, 1st, & 3rd positions. Make sure to notice all the dynamics, accents, and bowing indications, and count all the rhythms carefully. Eighth notes in the last line marked short should be spiccato (bounced off the string)

quarter note = 112

Musical notation for the Required Exercise in bass clef, 3/4 time. The piece consists of four lines of music. The first line starts with a *mp* dynamic and includes a shift to 3rd position. The second line starts with a *mf* dynamic and includes a shift to 1/2 position. The third line includes a shift to 1/2 position and a final note with an accent. The fourth line starts with a *f* dynamic and includes a *spiccato* marking. Fingerings (1, 2, 4) and bowing (v) are indicated throughout.

3. Solo: your choice! Choose something you can play well and that demonstrates your current level of playing. It can be all or a portion of a solo piece or exercise, or a section of an orchestra piece. No accompaniment is required, and it should be no longer than two minutes. If you need help determining what is appropriate to play, please ask your teacher or email Naomi at nwslh@novyo.org for assistance.

3A. Optional Solo/exercise: if you do not have another solo to play, you may use the one on the next page.

AUDITION MATERIALS CONTINUE ON THE NEXT PAGE



PHILHARMONIC BASS AUDITION CONTINUED.

3A. Optional Solo/exercise: if you do not have another solo to play, you may use the one below. Check the key signature, and make sure to observe staccato, legato, accent and dynamic marking (You may stop at the first note of measure 20.)

Double-bass part

The Elephant

from *The Carnival of the Animals*

C. Saint-Saëns (1835-1921)

$\text{♩} = 120$
 $\wedge = \text{short, heavy}$
 $\cdot = \text{short}$

Allegretto pomposo

2

10

18

END HERE

f

mf

1/2 pos.

